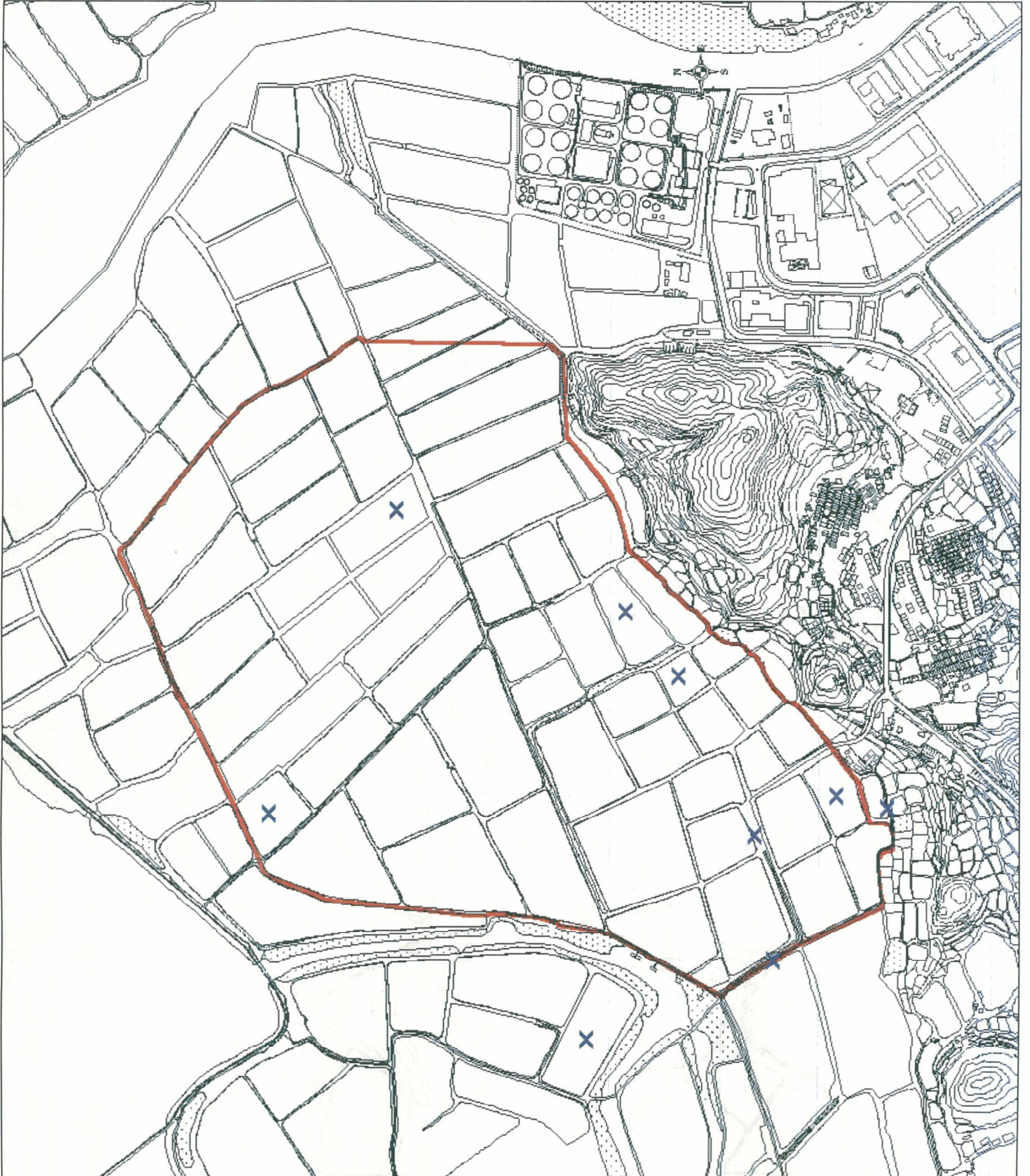


LEGEND

Study Site

× Ponds and drainage channels where aquatic invertebrate samples were taken



RPS

Figure 13.4 Aquatic invertebrate sampling locations

Drawn by: PD	Project no: P244
Scale: NTS	
Version: 2	Date: Dec 2005

Willow Mere House, Compass Point Business Park,
Stocks Bridge Way, St. Ives, Cambridgeshire,
PE27 5JL. Tel: 01480 466335 Fax: 01480 466911